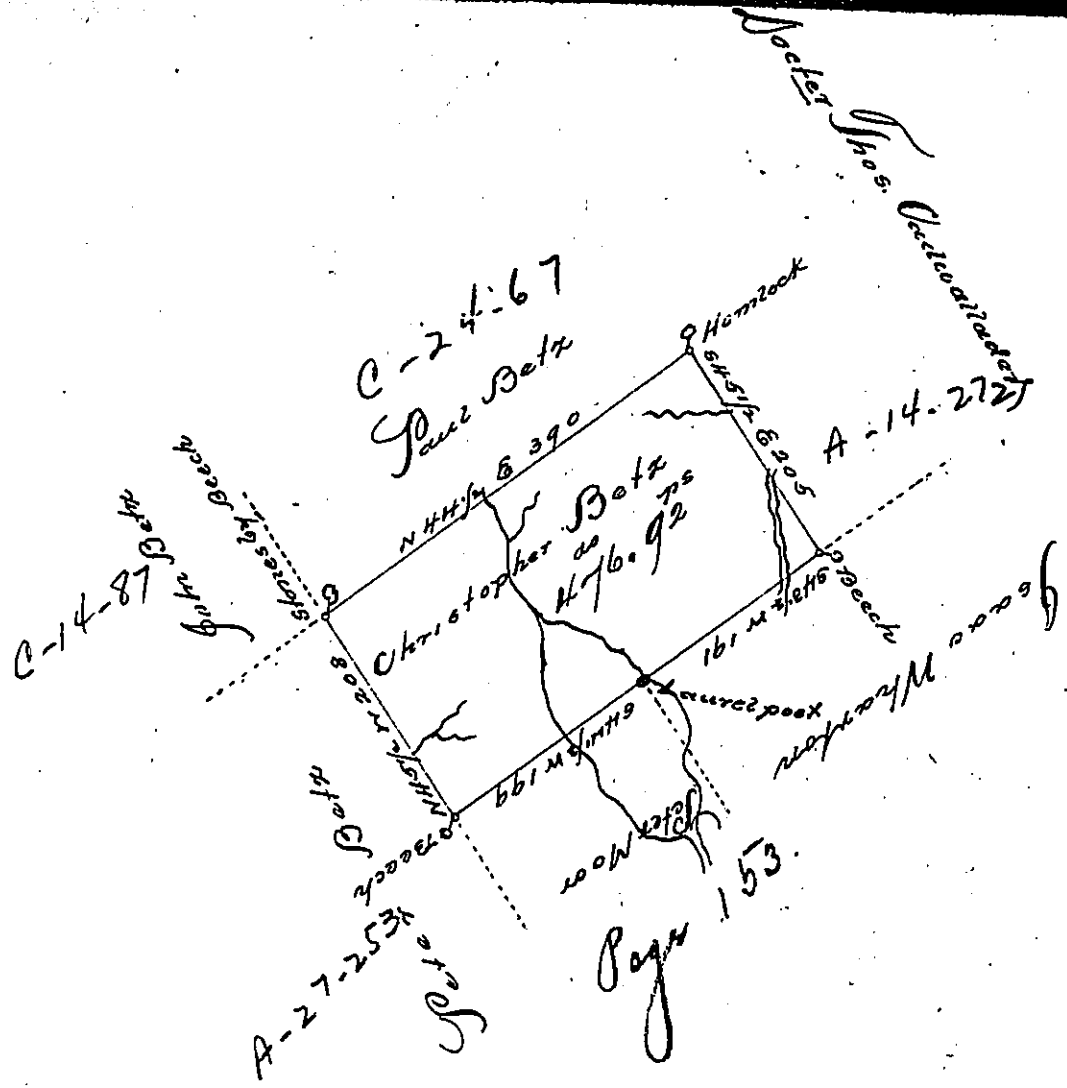


Pat. -  
H-25-428



In pursuance of an order dated July 29<sup>th</sup> 1803, Resurveyed May 27<sup>th</sup> 1806  
 from an original Survey to Christopher Betz on March 19<sup>th</sup> 1788  
 the above described Tract of Land situate on the waters of Lackawannock  
 Creek in Luzerne County containing four hundred seventy six Acres,  
 ninety two perches & allowance of six 7/10 Cent

Samuel Cochran Esq<sup>r</sup>  
 Surveyor Gen<sup>l</sup>

George Haines N. J.

IN TESTIMONY that the above is a copy of the original remaining on file in  
 the Department of Internal Affairs of Pennsylvania, made  
 conformably to an Act of Assembly approved the 16th day of  
 February, 1833, I have hereunto set my Hand and caused  
 the Seal of said Department to be affixed at Harrisburg,  
 this fourth day of April, 1899.

James W. Patton  
 Secretary of Internal Affairs.